

TOTAL ACRES = 18.68

OWNER:
MORNING STAR
SUNSHINE, INC.

- LEGEND**
- R(1) IDENTIFY AN R(1) ZONING DISTRICT
 - R(1) IDENTIFY AN UNCALCULATED POINT
 - R(1) IDENTIFY AN R(1) ZONING DISTRICT
 - C(1) IDENTIFY A CONCEPT DRAWING
 - IDENTIFY A CONCEPT DRAWING

ZONING/BUILDING SETBACKS

ZONING: C-1, CITY OF SUNDWALD
COUNTY: SUNDWALD COUNTY
ZONING DISTRICT: C-1
BUILDING SETBACKS: 10' SIDE YARD SETBACKS
10' FRONT SETBACKS
10' REAR SETBACKS
10' CORNER SETBACKS
10' FRONT SETBACKS

CERTIFICATION OF THE APPROVAL OF WATER SYSTEMS AND SEWER SYSTEMS

I, THE UNDERSIGNED, THE PUBLIC HEALTH ENGINEER, DO HEREBY CERTIFY THAT THE WATER AND SEWER SYSTEMS SHOWN ON THIS PLAN ARE IN ACCORDANCE WITH THE REQUIREMENTS OF THE SUNDWALD COUNTY HEALTH DEPARTMENT AND THE SUNDWALD COUNTY HEALTH DEPARTMENT ORDINANCES, AND DO NOT CONFLICT WITH OTHER LAWS OF THE COUNTY.

CERTIFICATION OF STREET NAMES

I, THE UNDERSIGNED, THE PUBLIC HEALTH ENGINEER, DO HEREBY CERTIFY THAT THE STREET NAMES SHOWN ON THIS PLAN ARE IN ACCORDANCE WITH THE REQUIREMENTS OF THE SUNDWALD COUNTY HEALTH DEPARTMENT AND THE SUNDWALD COUNTY HEALTH DEPARTMENT ORDINANCES, AND DO NOT CONFLICT WITH OTHER LAWS OF THE COUNTY.

CERTIFICATE OF APPROVAL FOR RECEIVING CERTIFICATE OF APPROVAL FOR RECEIVING

I, THE UNDERSIGNED, THE PUBLIC HEALTH ENGINEER, DO HEREBY CERTIFY THAT THE RECEIVING SYSTEMS SHOWN ON THIS PLAN ARE IN ACCORDANCE WITH THE REQUIREMENTS OF THE SUNDWALD COUNTY HEALTH DEPARTMENT AND THE SUNDWALD COUNTY HEALTH DEPARTMENT ORDINANCES, AND DO NOT CONFLICT WITH OTHER LAWS OF THE COUNTY.

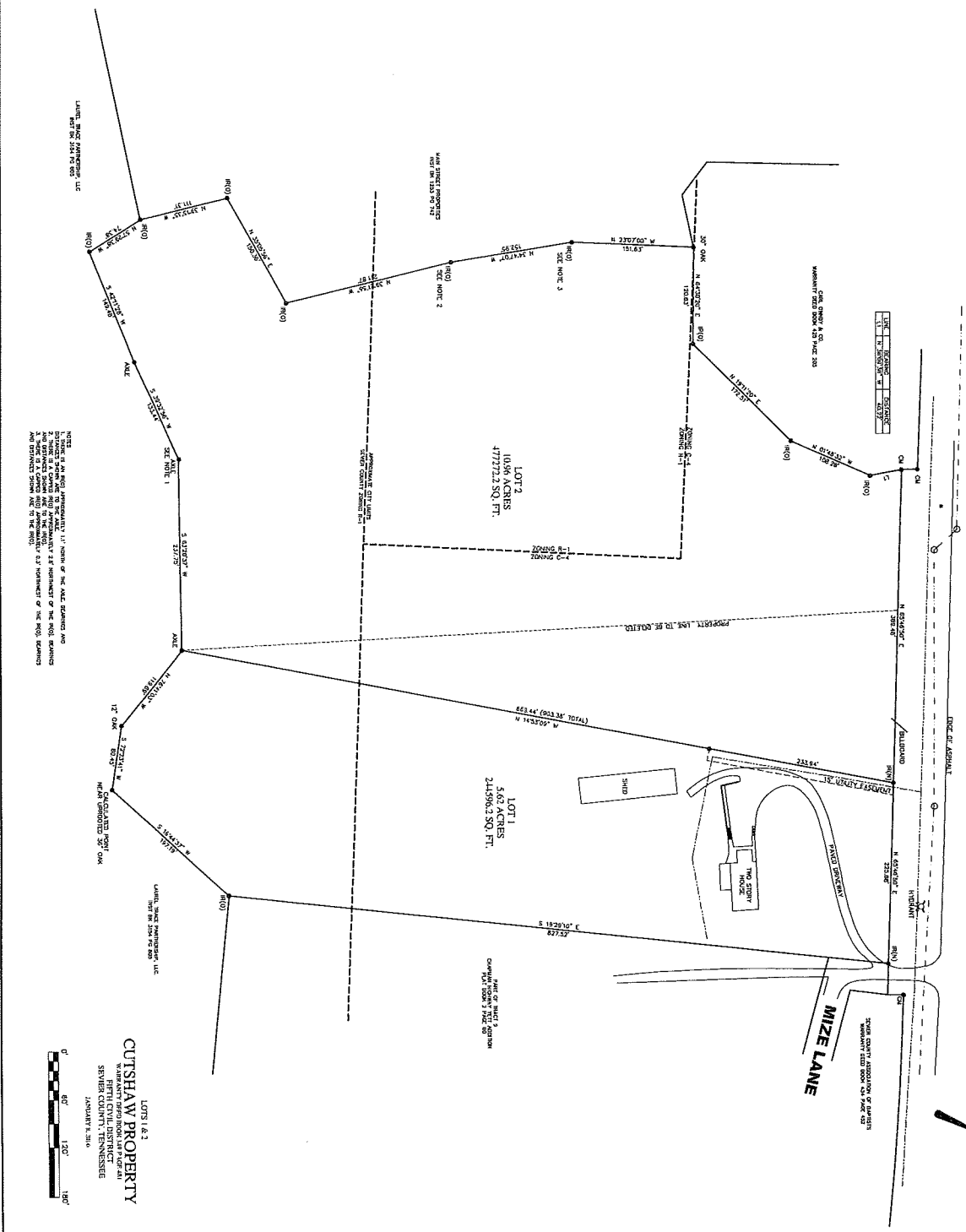
SURVEYOR'S CERTIFICATION

I, THE UNDERSIGNED, THE SURVEYOR, DO HEREBY CERTIFY THAT THIS PLAN IS A TRUE AND CORRECT REPRESENTATION OF THE SURVEY SHOWN THEREON, AND THAT I AM A LICENSED SURVEYOR IN THE STATE OF SUNDWALD COUNTY.

NO BOX BEARING STATE A
SUNDWALD, TN 37165-1600
OFFICE PHONE 423-1234



WEST MAIN STREET
US 411 & 441
SR 35 & 71



CHAPMAN HWY

LOT 1 & 2
CUTSHAW PROPERTY
PENTON CIVIL ENGINEERING
SERVICES, INC.
HARRISBURG, TN

